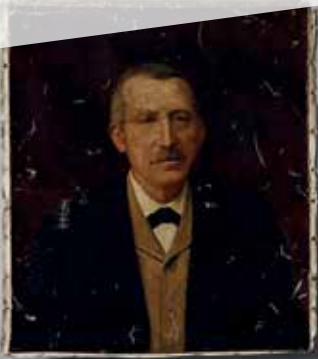


# MODA

## Interior Doors



### Fitting & Fixing Guidelines

[www.curatedbyjeld-wen.co.uk](http://www.curatedbyjeld-wen.co.uk)



# CURATED

by **JELD WEN**

## Installation, Finishing and Care Instructions

### INTRODUCTION

Timber is a natural and sustainable product which, if properly treated, is protected from excessive changes due to variations in humidity and temperature. JELD-WEN doors are of engineered construction, with veneered faces, for greater stability. However if doors are exposed to such changes without correct treatment, movement or distortion, such as swelling, shrinking, warping or splitting may occur.

Prior to finishing and hanging this door, inspect for damage and defects, DO NOT proceed to work on it if any noticeable damage or defect is evident. Finishing and/or installation of the door constitutes acceptance of aesthetic quality.

### IMPORTANT

- Doors must be stored flat on three level bearers and kept dry at all times
- Avoid direct contact with sunlight before the door has been finished
- Do not install or store the door in newly plastered rooms
- Polythene wrapping should remain on the doors until immediately before finishing and installing
- Check the door for defects or damage before installation - DO NOT continue to install the door if any defects or damage are found
- Any small nicks or scratches should be sanded using fine sandpaper before finishing
- Any door which has been modified cannot be exchanged, except doors with proven manufacturing defects
- Doors should be handled carefully with clean gloves and not dragged across each other or across other surfaces
- Doors must be sealed on both faces and ALL edges prior to installation
- Claims for twisting, bowing, shrinking, or swelling that are moisture related (while the doors are not sealed according to our guidelines) will be rejected.

### FINISHING

It is essential that the door is completely finished on the two faces and all FOUR edges plus any cut-outs for locks, handles, hinges and letter plates etc. Prior to finishing or sealing, lightly sand any handling marks. Do not use wire wool or other sanding materials containing steel or iron on our doors.

Primed doors may be finished using a proprietary branded paint. Usually three top coats are satisfactory but it is strongly recommend you that you treat this door in accordance with the paint manufacturer's instructions.

A light sanding between coats will provide the best finish. Adequate drying time must be allowed between each coat. Failure to seal the doors accordingly will invalidate any claims.

**Note:** Polishes, waxes, oils or dyes should not be used on these doors.

### TRIMMING/INSTALLATION

Doors for internal use should be fully finished before being hung.

If the door is to be reduced in size, an equal amount of timber should be trimmed from either side or bottom, this must never exceed **10mm in total, 5mm each side and 6mm from the bottom.** JELD-WEN do not recommend trimming the top of the door. All lock or handle cavities should be kept to a minimum size and sited away from the mid-rail joint, these areas should then be re-sealed.

JELD-WEN recommend as a minimum three 76mm (3") hinges for interior doors. Whilst checking the size in the door frame, mark hinge positions and any levers or locks you wish to attach to the door.

### MAINTENANCE

Regular maintenance of this door should be made in accordance with the paint manufacturer's instructions, to prevent breakdown of the wood finish and to protect the timber from deterioration.

In the event of this door being proven to have a manufacturing defect where a replacement is needed, the liability shall under no circumstance exceed the price of the defective door. JELD-WEN will not be held responsible for problems resulting from poor workmanship applied to doors.

### CONDITIONS OF SALE

JELD-WEN will not be held responsible for any incidental work or problems as a result of bad storage, handling or incorrect fitting and finishing of our doors. The foregoing does not affect your statutory rights.



Many doors weigh over 18kg and may require consideration when handling



MAY CONTAIN GLASS The glass used in glazed products meets the requirements of BS6206 or EN12150.